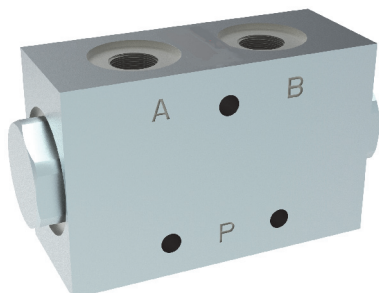


Flow divider with very high division accuracy

Series MTDA08HG



- division accuracy 1,5% based on operating flow range
- standard-supply zinc-nickel coating
- robust, simple and reliable
- easy to service
- flows can be split or merged with accuracy (divide/combine functions).

1 Description

1.1 General

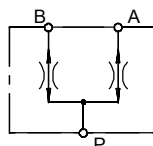
MTDA08HG is a flow divider with very high division accuracy and a large operating flow range. With this new valve, division accuracy is specified in relation to the supply flow rate and not, as is usual in the market, to the nominal flow rate (see chart).

Another notable feature is the standard-supply zinc-nickel coating, with a corrosion-resistance of over 720 hours of salt-spray test, DIN EN ISO 9227. They divide a flow into two usually equal parts (1:1). When flow passes through valve in the opposite direction, the two part-flows are combined into one single flow (added). The dividing and combining functions are largely independent of the pressures of the two divided flows and of the fluid viscosity.

1.2 Application examples

- Work access platforms
- Lifting platform
- Car transporter
- Hydraulic platform
- Hydraulic ramp
- Hydraulic door drive

2 Symbols



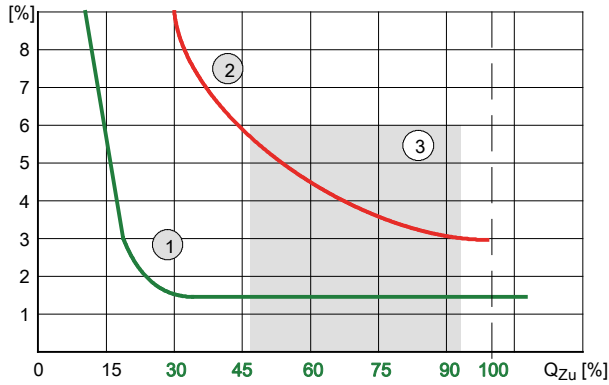
3 Technical data

| General characteristics | Unit | Description, value |
|---|--------------------|---|
| Maximum pressure | bar | 250 continuous, 315 peak pressure |
| Control flow range | l/min | 16 , 25 , 32 und 50 |
| Division accuracy in control flow range | % | 1,5 with maximum loading difference $P_A:P_B = 200$ bar and spool axis is horizontal |
| Oil temperature range | °C | -20 ... +80 |
| Viscosity range | mm ² /s | 10 ... 250 |
| Oil cleanliness | | minimum class 9 of NAS 2638 or class 19/17/14 of ISO 4406 |
| Seals | | (NBR) Nitrile Butadiene Rubber |
| Weight | kg | ca. 2,2 |
| Port threads | A, B, P | G 3/8", DIN EN ISO 9974-1 |
| Salt spray test | | Corrosion resistant >720 hours |

4 Characteristic curves

4.1 Division accuracy [%]

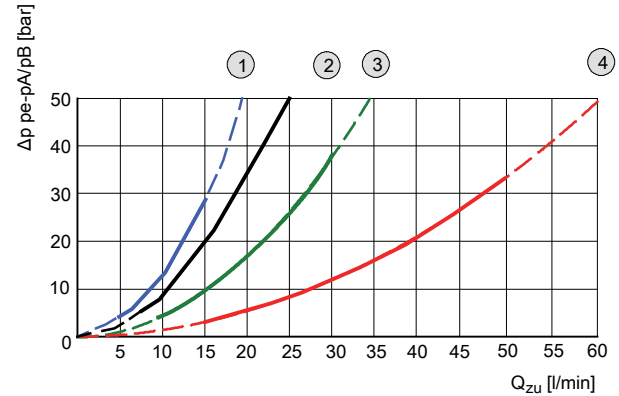
with oil viscosity of 35 mm²/s



| | |
|---|--|
| 1 | MTDA08HG (high-precision) based on operating flow range |
| 2 | MTDA08 standard based on operating flow range |
| 3 | MTDA08 standard +/- 3 % based on nominal flow range |

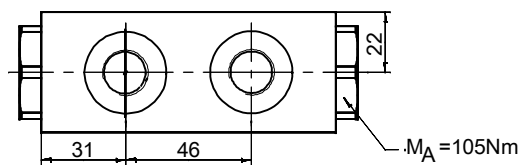
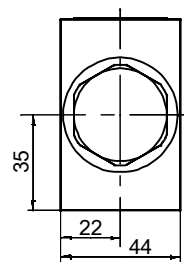
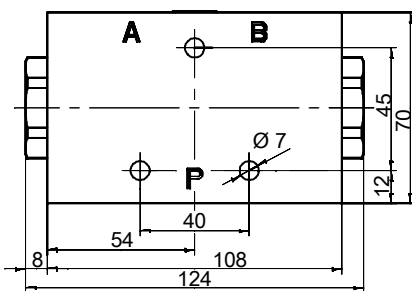
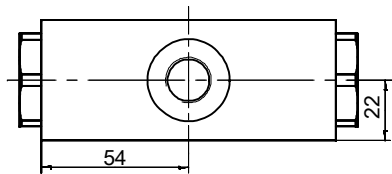
4.2 Pressure drop characteristics (Δ)

Pressure drop v. flow rate with oil viscosity of 35 mm²/s



| | |
|---|-------------------------------------|
| 1 | Control flow range = 5 - 15 l/min |
| 2 | Control flow range = 7,5 - 25 l/min |
| 3 | Control flow range = 10 - 32 l/min |
| 4 | Control flow range = 15 - 50 l/min |

5 Dimensions



info.kl@bucherhydraulics.com

www.bucherhydraulics.com

© 2016 by Bucher Hydraulics GmbH, D-79771 Klettgau

All rights reserved.

Data is provided for the purpose of product description only, and must not be construed as warranted characteristics in the legal sense. The information does not relieve users from the duty of conducting their own evaluations and tests. Because the products are subject to continual improvement, we reserve the right to amend the product specifications contained in this catalogue.

Classification: 430.310.335.310.