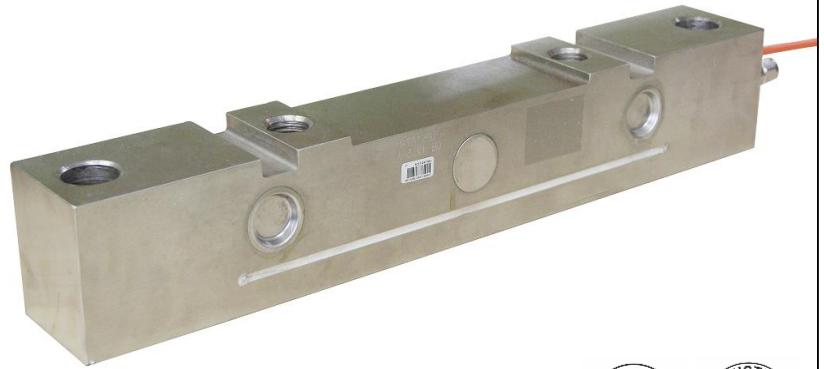


BAYKON BY540 is a special type, alloy steel construction double ended type shear beam loadcell and has been specifically designed for the truck and railway scales. It is also suitable for on board weighing, ship weighing, and similar high capacity applications.

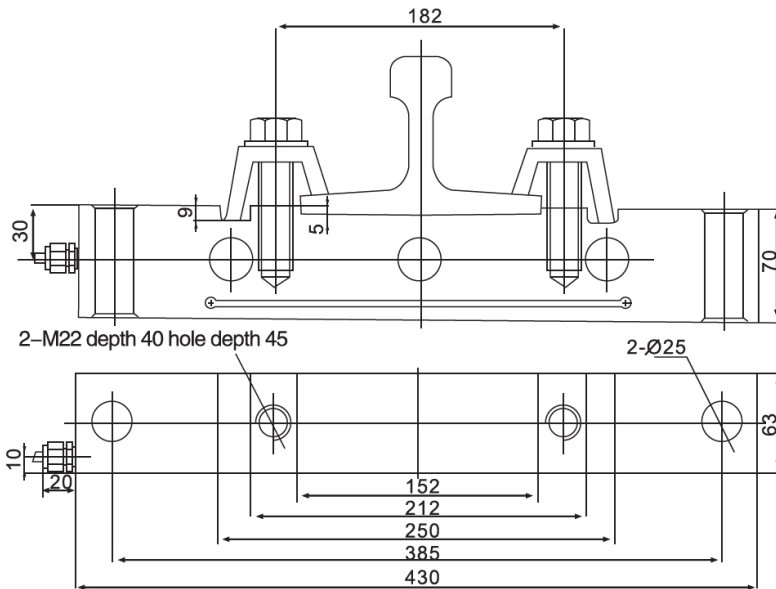


Key features;

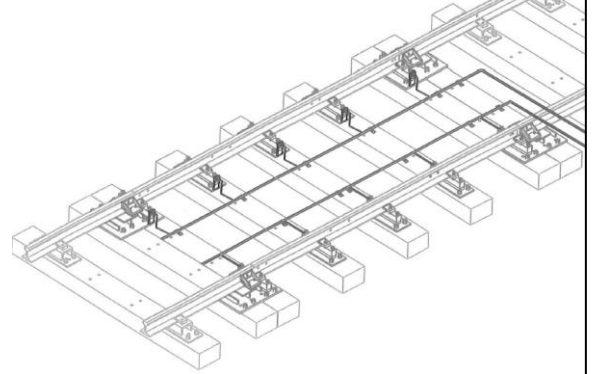
- Capacities 12,5 and 30 ton
- Low profile
- Alloy steel construction
- Protection IP67 / IP68



Dimensions (mm);



Typical Application



Technical Specifications;

Maximum capacity	E_{max}	t	12,5 / 30
Output sensitivity	RO	mV/V	2.0 ± 0.002
Temperature effect on zero		%FS / 10°C	$\leq \pm 0.2$
Temperature effect on sensitivity		%FS / 10°C	$\leq \pm 0.2$
Combined Error		% E_{max}	$\leq \pm 0.3$
Safe load limit / Over load limit		% E_{max}	150 / 200
Zero balance		% RO	$< \pm 1$
Excitation (recommended)		V DC	5 - 12
Excitation (maximum)		V DC	15
Input resistance		Ω	750 ± 10
Output resistance		Ω	702 ± 3
Insulation impedance		M Ω	≥ 5000 (50 VDC)
Compensated temperature range		°C	- 10 ... + 40
Operating temperature range		°C	- 30 ... + 70
Material			Alloy Steel
Protection class			IP67 / IP68
Cable			Length 12m , Diameter 6 mm

(Properties are subject to change without notification. 04/ 2017)