

SERIE **XP** TANDEM

**3.1.2.4.**

CODICE DI ORDINAZIONE / DECODING

3.1.2.4 . XXX . X . 0 . 1 . 0

**UNI**  
21-222

XP 73X  
XP 84X  
XP 100X  
XP 116X  
XP 132X  
XP 148X

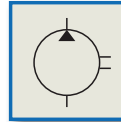
ALLESTIMENTI SPECIALI/SPECIAL OPTIONS  
1 = MONTAGGIO IN TANDEM/TANDEM FITTING

ROTAZIONE/ROTATION  
1 = SINISTRO/ANTICLOCKWISE  
2 = DESTRO/CLOCKWISE

CILINDRATA/DISPLACEMENT

CODICE BASE/BASIC CODE

**Pompa ad Ingranaggi**  
*Gear Pump*

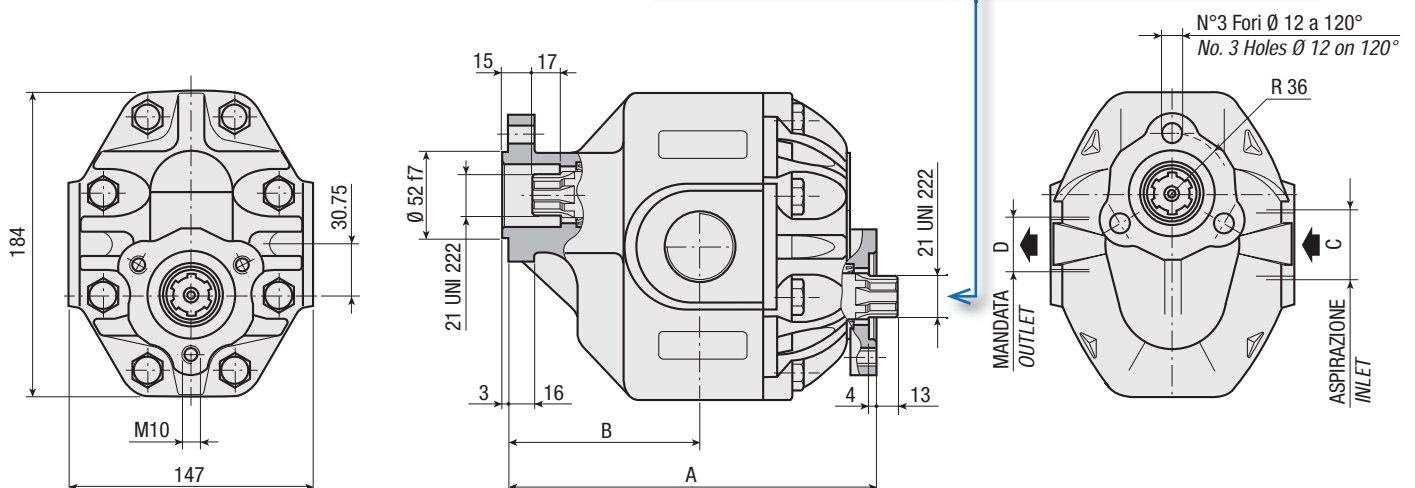


**CARATTERISTICHE E DATI TECNICI / SPECIFICATIONS AND TECHNICAL DATA**

| TIPO<br>TYPE | CODICE<br>CODE               | CILINDRATA<br>DISPLACEMENT<br>cm <sup>3</sup> /rev. | A<br>mm | B<br>mm | C<br>ASPIRAZIONE<br>INLET | D<br>MANDATA<br>OUTLET  | PESO<br>WEIGHT<br>kg |
|--------------|------------------------------|---|---------|---------|---------------------------|-------------------------|----------------------|
| XP 73X       | 3.1.2.4. <b>073</b> .X.0.1.0 | 73  | 205     | 106     | 1" G                      | 3/4" G                  | 17.4                 |
| XP 84X       | 3.1.2.4. <b>084</b> .X.0.1.0 | 84  | 209     | 107     | 1" 1/4 G                  | 1" G                    | 18.0                 |
| XP 100X      | 3.1.2.4. <b>100</b> .X.0.1.0 | 100   | 215     | 111     | 1" 1/4 G                  | 1" G                    | 18.9                 |
| XP 116X      | 3.1.2.4. <b>116</b> .X.0.1.0 | 116   | 221     | 116     | 1" 1/4 G                  | 1" G                    | 19.8                 |
| XP 132X      | 3.1.2.4. <b>132</b> .X.0.1.0 | 132   | 227     | 119.5   | 1" 1/2 G                  | 1" G                    | 20.7                 |
| XP 148X      | 3.1.2.4. <b>148</b> .X.0.1.0 | 148   | 233     | 119.5   | 1" 1/2 G                  | 1" G </td <td>21.6</td> | 21.6                 |

**KIT ACCOPPIAMENTO POSTERIORE**  
*REAR MOUNTING KIT*

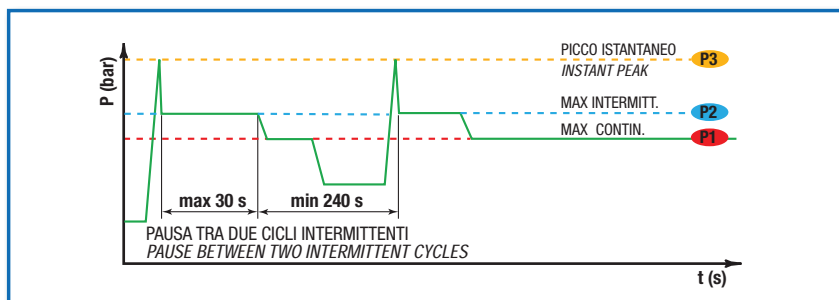
2.05.P002.0000



- A richiesta possono essere fornite le pompe ad ingranaggi con le guarnizioni HNBR per climi freddi (-40 °C).
- On request our gear pumps may be supplied with HNBR seals for cold climates (-40 °C).

**DATI TECNICI / TECHNICAL DATA**

**ESEMPIO CICLI LAVORO / EXAMPLE OF WORKING CYCLES**



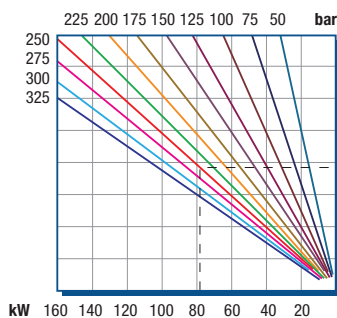
|   |                                      |
|---|--------------------------------------|
| <b>Pressione d'aspirazione:</b><br><i>Inlet pressure:</i>             | 0.7 ÷ 1.5 bar<br>(assoluti/absolute) |
| <b>Campo viscosità lavoro:</b><br><i>Operating viscosity range:</i>   | 12 ÷ 100 cSt                         |
| <b>Temperatura fluido °C (t):</b><br><i>Fluid temperature °C (t):</i> | -10° + 80° C                         |

| Pressione Lavoro<br><i>Working Press.</i> | P2 | Contaminazione / <i>Contamination</i> |          | Filtro / <i>Filter</i><br>βx = 75 |
|---|----|---------------------------------------|----------|-----------------------------------|
|   |    | NAS 1638                              | ISO 4406 |                                   |
| ≤ 200 bar                                 |    | 12                                    | 21/18    | 40 μm                             |
| ≥ 200 bar                                 |    | 11                                    | 20/17    | 25 μm                             |

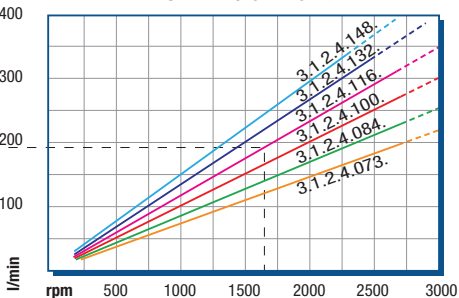
◀ **FILTRAZIONE CONSIGLIATA (ritorno o mandata)**  
**RECOMMENDED FILTERING (return or outlet)**

| TIPO / <i>TYPE</i>  |  | XP 73X | XP 84X | XP 100X | XP 116X | XP 132X | XP 148X |
|---|--|--------|--------|---------|---------|---------|---------|
| Cilindrata<br><i>Displacement</i>   | Vg cm <sup>3</sup> /n<br>cm <sup>3</sup> /rev. | 73     | 84     | 100     | 116     | 132     | 148     |
| Pressione massima continua<br><i>Max continuous operating pressure</i>      | P1   | 290    | 270    | 260     | 250     | 230     | 190     |
| Pressione massima intermittente<br><i>Max intermitt. operating pressure</i> | (max 30 s) P2                                  | 320    | 310    | 290     | 280     | 270     | 230     |
| Pressione massima di picco<br><i>Max peak pressure</i>                      | (≤ 0.1 s) P3                                   | 450    | 375    | 375     | 340     | 315     | 270     |
| Velocità massima intermittente<br><i>Max intermittent speed</i>             | (P ≤ 20 bar) n3                                | 3800   | 3500   | 3500    | 3000    | 3000    | 3000    |
| Velocità massima continua<br><i>Max continuous speed</i>                    | (≤ P1) n1                                      | 2700   | 2700   | 2700    | 2700    | 2700    | 2700    |
| Velocità minima intermittente<br><i>Min intermittent speed</i>              | (≤ P2 x 0.5)<br>(max 30 s) n4                  | 350    | 350    | 300     | 300     | 300     | 300     |

**POTENZA ASSORBITA / ABSORBED POWER**

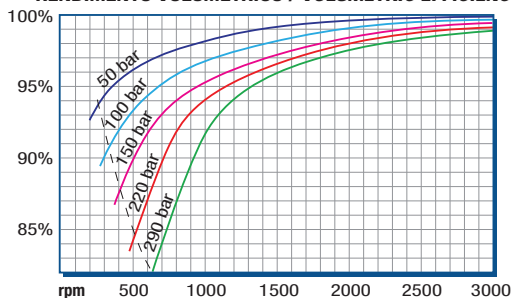


**PORTATA / CAPACITY**

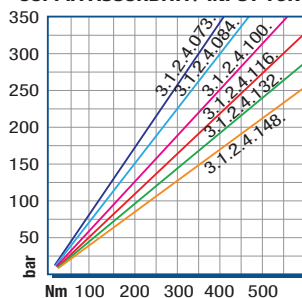


**DIAGRAMMI / DIAGRAMS**

**RENDIMENTO VOLUMETRICO / VOLUMETRIC EFFICIENCY**



**COPPIA ASSORBITA / INPUT TORQUE**



RILIEVI ESEGUITI CON OLIO  
ISO VG 46 A 50° C (ν=30 cSt)  
THE ABOVE SPECIFICATIONS  
REFER TO OIL TYPE ISO  
VG 46 AT 50° C (ν=30 cSt)

**!** Verificare, nel caso vi sia l'utilizzo contemporaneo delle due pompe, che la coppia sull'albero in uscita non superi i 270 Nm.  
*In case of simultaneous use of both pumps, make sure that the torque on output shaft does not exceed 270 Nm.*