

DRELLOSCOP 1092



Drelloscopie®



- *Especially developed for steel industry*
- *Highest light intensity for continuous operation*
- *No external ventilation necessary for the high-duty quartz-glass flash tubes and therefore no pollution of the lamps interior*
- *Automatic limitation of the flash frequency*
- *Manual or external synchronization*
- *Maintenance friendly due to modular design*

Measure, monitor and analyse motion

with stroboscopes from

DRELO

www.drello.de

DRELLOSCOP 1092



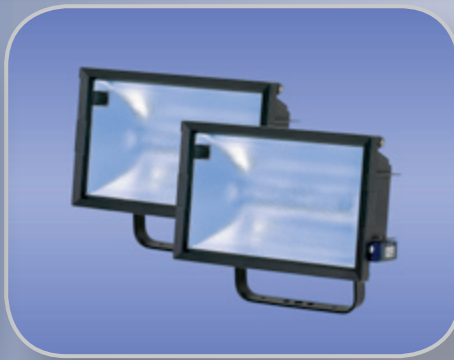
Power box

Designed for the visual quality inspection on skin-pass stands as well as inspection of the surface of tinned, galvanized or coated sheet metal in steel industry.

Robust, splash-proof (IP54) metal housing for wall mounting.

Detailed status indicators on the front panel.

Visual representation of surface defects e.g. periodically repeating roller marks, chatter marks, scale coatings or emulsion drops.



Lamps

Light metal die cast housing with mounting bracket.

Heat-resistant ornamental glass.

No external ventilation necessary for the high-duty quartz-glass flash tubes and therefore no pollution of the lamps interior by oil or dust particles.



Remote control

Robust, splash-proof housing.

Large 7 segment LED display in min-1 oder s-1.

Magnetic holders are attached to the bottom of the control device for fixing to the machine frame.

Connection to the power box via 15 m cable.

Technical data

Model DRELLOSCOP 1092

Control, internal (manual)	manual by rotary adjuster		
Control, external	Impulse 0,5...30 V _s or optional by DC voltage 0...10 V or DC current 0...20 mA		
Flash frequency	60...130 s ⁻¹		
Electronic image shifting	smooth real-time image shifting 0...360°		
Slow motion function	smooth slow motion function		
Measured value display	5-digit 7-segment display, 12 mm digit height, in s ⁻¹		
Flash energy	max. 5,5 J per flash, infinitely variable		
Flash half time	approx. 50 µs		
Protection class	IP 54		
Electrical			
Supply voltage	230 V _{AC} (+6% / -10%), 40...60 Hz		
max. power consumption [W]	1500		
max. power consumption [A]	6,5		
Ambient conditions			
Ambient temperature [°C]	0 bis +50		
Air humidity [% relative humidity]	≤ 80, non-condensing		
Overall dimensions, power box			
Dimension (W x H x D) [mm]	500 x 500 x 225		
Weight [kg]	16		
Overall dimensions, remote control			
Dimensions (W x H x D) [mm]	210 x 288 x 90		
Weight [kg]	approx. 2,5		
Lamp			
Number of lamps	2		
Connection cable	10 m, each		
Overall dimensions			
Dimensions (W x D x H) [mm]	560 x 345 x 327		
Weight [kg]	approx. 15,5		
Illumination			
Illuminant	High-duty quartz flash tube 106-1		
Illumination	@1500 mm	@2000 mm	@2500 mm
Length [mm]	2430	3240	4050
Width [mm]	1290	1720	2150
Luminosity [lx]	1780	1000	640
Options			
RS232 Interface			
Lamps with heat resistant frosted glass			

Measure, monitor and analyse motion

with stroboscopes from

DRELO

www.drello.de