

Operating, Maintenance Instruction



Helical Rotor Pump

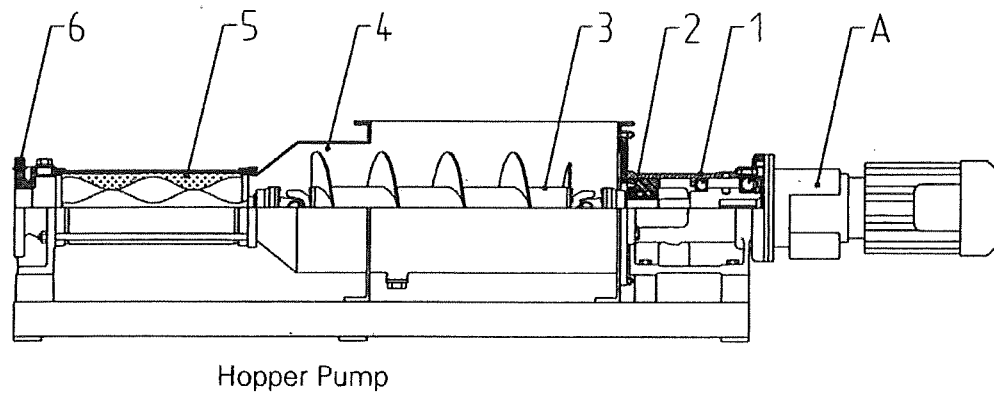
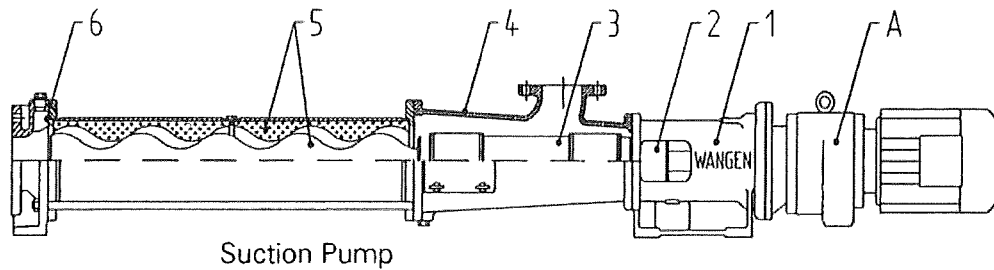
Type KL

Instruction Handbook KL

Chapter 2

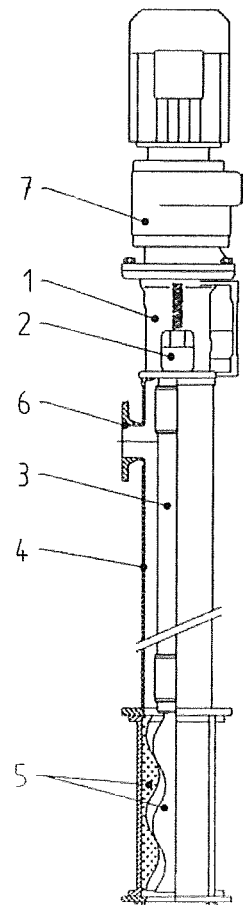
2 Set-up and General Description

2.1 Pump set-up



- A Drive Unit
- 1 Bearing Chair
- 2 Sealing Unit
- 3 Joint (by Hopper Pump with Feed Screw)
- 4 Suction Housing / Hopper Housing / Immersion Tube
- 5 Pump Set (Rotor/Stator)
- 6 Discharge Nozzle / Outlet Nozzle

Submersible Pump



Instruction Handbook KL

Chapter 9

9.2 Stator Replacement

9.2.1 Stator replacement of suction pumps

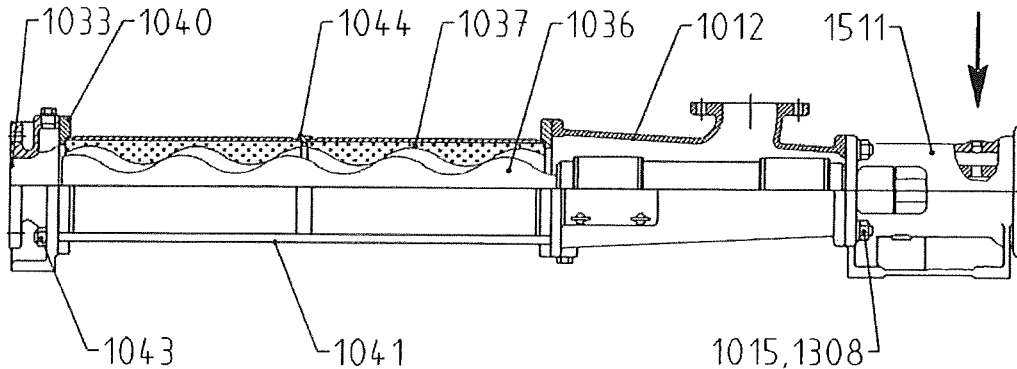


Fig. 9-2

- 1st Undo and remove the mounting bolts of pressure connection 1033. Unscrew tie rod nuts 1043 and remove pressure connection 1033 complete with insertion ring 1040.
- 2nd Unscrew tie rods 1041.
- 3rd Withdraw stator 1037 toward the front by means of a rotary movement (opposite to the rotational direction of the pump). For larger stators it is recommended to use chain tongs for this purpose. Arrest pump set. (→ Fig. 9-1)
- 4th Mounting in reverse order: Place spacer ring 1040 complete with inserted O ring onto suction casing flange (adjust by means of stud bolts).
- 5th Smear rotor with lubricant (e.g. silicon oil) and slide on stator 1037 by means of a rotary movement (use a piece of wood for support). Ensure that the stator slides into spacer ring 1040 on the suction casing flange. Remove stud bolts (start with the bottom bolts) and screw in tie rods 1041.
- 6th For two-part pump sets, insert intermediate ring 1044 after the first stator has been fitted, then slide on the next stator.



With stators with an S-ground joint, note the installation orientation.
The funnel shaped entry side des Stators shows

- to the suction housing / hopper at counter-clockwise rotation
- to the discharge nozzle at clockwise rotation

Do not tighten the stators against one another!

- 7th Place second spacer ring 1040 complete with inserted O-ring onto stator.
- 8th Fit discharge nozzle and evenly tighten tie rod nuts crosswise.

