

KD 315 L1** CIRCULAR DUCT FAN

Item no. 25336

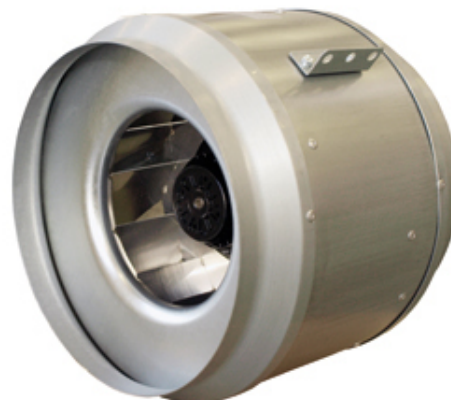
Version: 50 Hz

Document type: **Product card**
 Document date: **2015-10-20**
 Generated by: **Systemair Online Catalogue**

Description

- High efficiency – low noise
- Speed-controllable
- Integral thermal contacts
- Can be installed in any position
- Maintenance-free and reliable

The KD series have external rotor motors with a new type of mixed flow impeller which reduces the external dimensions of the fans. These fans have a high capacity in relation to their compact design. Brackets are supplied with the fans to make installation easier. The FK mounting clamp facilitates easy installation and removal and prevents the transfer of vibrations to the duct. To protect the motor from overheating the fan has integral thermal contacts with manual reset. The casing is manufactured from galvanised sheet steel.

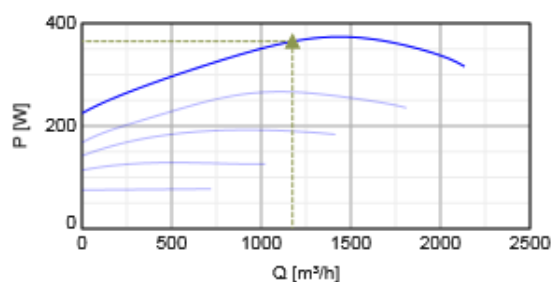
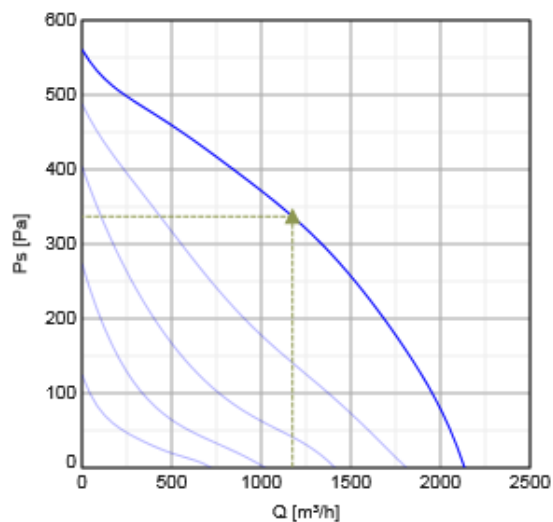


Technical parameters

Voltage	230	V
Frequency	50	Hz
Phase	1	~
Input power (P1)	372	W
Current	1,62	A
Max. airflow	2135	m³/h
Fan impeller speed	2595	r.p.m.
Max. temperature of transported air	70	°C
Max. temperature of transported air when voltage-controlled	70	°C
Sound pressure level at 3 m (20m² Sabine)	54	dB(A)
Weight	9	kg
Insulation class	F	
Enclosure class, motor	44	IP
Capacitor	10	µF

Performance

Diagrams



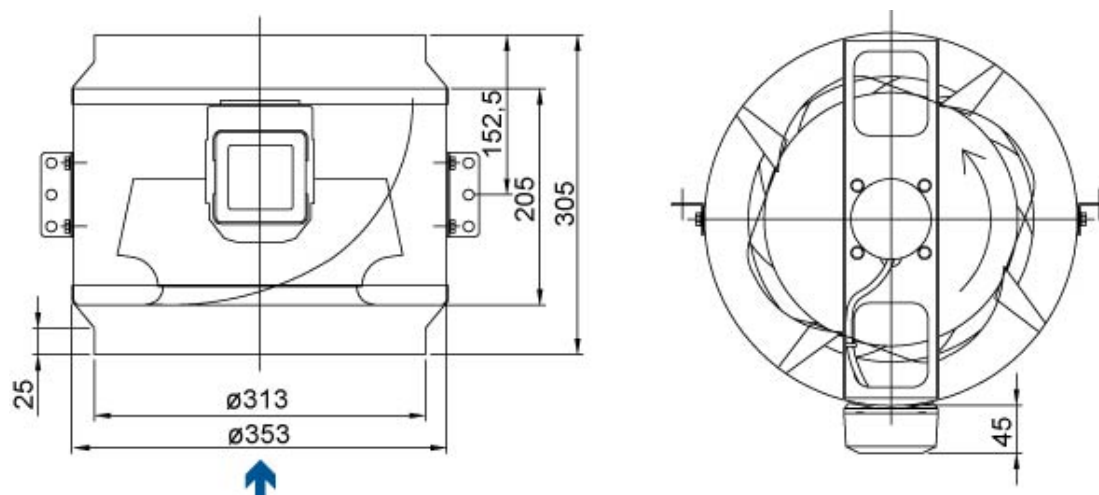
Hydraulic data

	Working point						
	Q [m³/h]	Ps [Pa]	P [W]	n [r.p.m.]	I [A]	SFP [kW/m³/s]	U [V]
Max efficiency	▲ 1174	▲ 337	▲ 365	2609	1.59	1.12	230

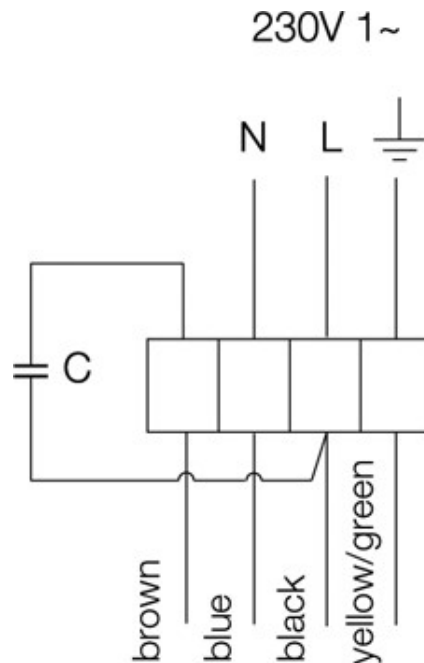
Acoustic data

Sound power level		63	125	250	500	1k	2k	4k	8k	Tot
Inlet	dB(A)	59	69	71	75	75	71	69	67	80
Outlet	dB(A)	54	68	70	74	75	76	71	65	81
Surrounding	dB(A)	33	36	44	60	50	47	48	40	61

Dimensions



Wiring



Accessories

Electric accessories

Drawn watch 0-6 (17315)
 REV-3POL/03 ON/OFF (33978)
 RE 3 Speed control (5001)
 REU 3 Speed control (5005)
 DTV500-OEM incl connection kit (5044)
 HR1 Room Humidistat IP21 (5150)
 RT 0-30 Room Thermostat (5151)
 T 120 Timer (5165)
 X-ETFV MINI Speed control (5312)
 REE 2 Speed control (5316)
 C04D Thermostat -35... +20 C (5630)
 RET 6 Temperature regulator (5694)
 REP 6 Pressure regulator (5696)
 REPT 6 Digital regulator (5698)
 2302/00 EF transformer (68501)
 CO2RT-R-D Transmitter (6993)
 Presence detector/IR24-P (6995)
 STL 3 Speed controller (84261)
 PT-108 Room Thermostat 6-30gr (9139)
 MicroREX D21 Plus TimeSwitch (9800)

Accessories

FK 315 Fast clamp (1613)
 VKK-315 Back draft damper (1628)
 VBF 315 Water heating battery (1734)
 FFR 315 Filter cassette (1779)
 FGR 315 Filter cassette G3 (1818)
 CWK 315-3-2,5 Duct cooler,circ (30025)
 FFR-S 315 cassette (307529)
 FGR-S 315 filter cassette EU3 (307580)
 EFD 315 Damper (311608)
 X-MRK 315 CH Round Damper (311631)
 X-MRZ 315 CH Round Damper (312145)
 CBMT/P 315-30 1Ø HEATER KIT (3882)
 CBMT/P 315-54 1Ø HEATER KIT (3883)
 LDC 315-900 Silencer (5197)
 CB 315-6,0 400V/2 Duct heater (5374)
 CB 315-9,0 400V/3 Duct heater (5375)
 CB 315-3,0 230V/1 Duct heater (5386)
 CB 315-12,0 400V/3 Duct heater (5387)
 VBC 315-2 Water heating batt (5461)
 CBM 315-9,0 400V/3 Duct heater (5485)
 IGC-315 Intake grid (5586)
 RSK-315 Back draft damper (5604)
 SG 315 Protection guard (5611)
 VK-30 Louvre shutter (5641)
 VBC 315-3 Water heating batt (9844)

Specification text

The Circular duct fan is reliable in operation and maintenance- free and has a mixed flow impeller. In addition to that the fan achieves a high efficiency at low noise level. The box consists of crimped and electroplated steel plate, witch is powder- coated. For an easy assembling the installation cramps are fixed to the fan. The provided standard connecting collar of the FK - mounting clamps assures an easy assembling and disassembling and avoids the transmission of vibration to the piping system. The assembling is possible in each fitting position. Furthermore the fan has a freewheeling radial impeller with backwards-curved impeller vane. The actuation is carried out by a maintenance- free, speed- controlled external rotor motor. Through dropping the tension, the fans can be speed- controlled with the help of a stepless thyristor or a 5- step transformer. The fans have integral thermal contacts with reset device according to EN 60335-2-80 for protecting the engine. For annealing the engine is designed inside the air flow. Completely with the impeller in two levels the engine is statically and dynamically weighed heavy according DIN ISO 1940.

Documentation



202341_Fans_Instructions_CE__A003.pdf (1,46MB)